

**G**oodfellows  
estate agents.com

17  
Tynevale Terrace  
Newcastle Upon  
Tyne  
NE15 8EL

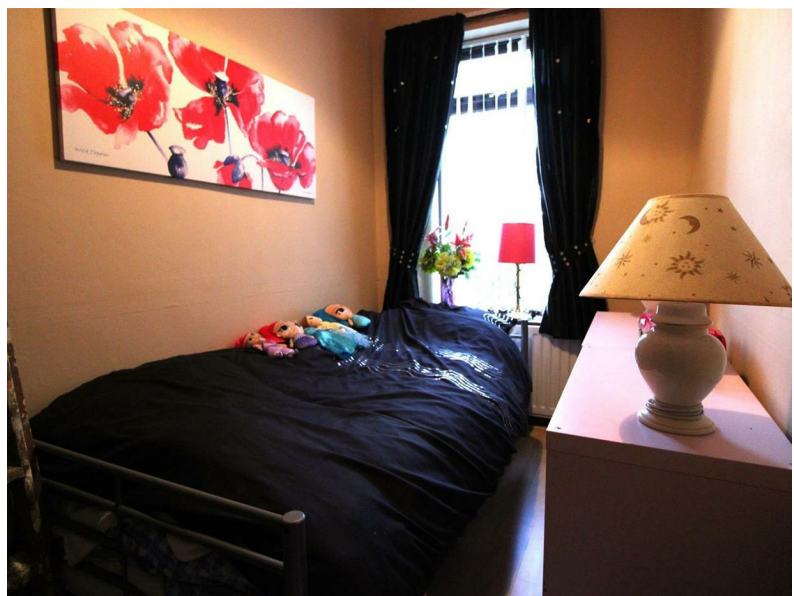
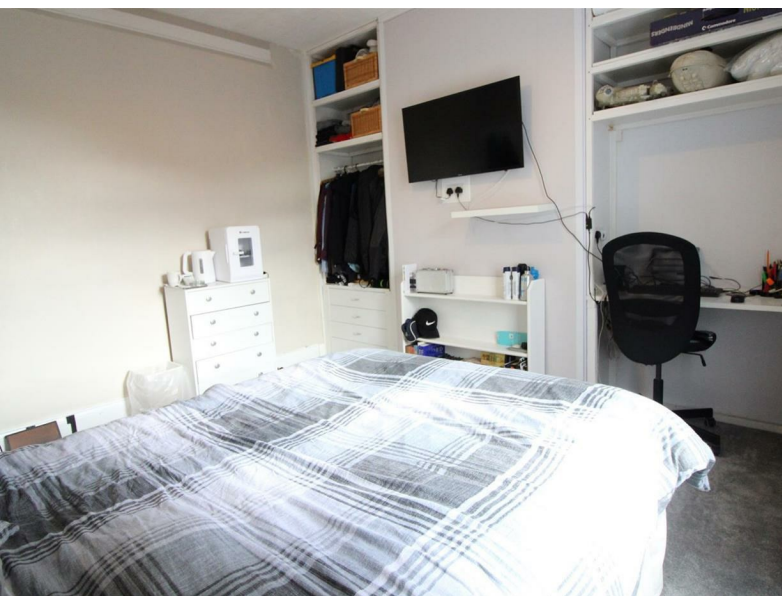
17 Tynevale Terrace  
Lemington  
Newcastle Upon Tyne  
NE15 8EL



Guide Price  
£130,000

3 bedroom mid terrace house benefitting from gas central heating and sealed unit double glazed windows. Briefly comprising of an Entrance Hallway with laminate flooring and stairs to the first floor, Dining Room with laminate flooring, storage cupboard, French doors to the rear yard, opening to the Lounge which has a bay window, feature fireplace and laminate flooring. Kitchen with wall and base units, roll top work surfaces, one and a half stainless steel sink and drainer unit, tiled walls, integrated electric oven and gas hob with extractor hood over, plumbed for washing machine and dishwasher, Combi boiler enclosed in a wall unit. First floor Landing with a loft hatch. Bathroom which has a bath, separate walk-in double shower cubicle with a mains shower, low level w/c, vanity units with a wash hand basin, heated towel rail, laminate flooring, panelled ceiling with inset spotlights, ti

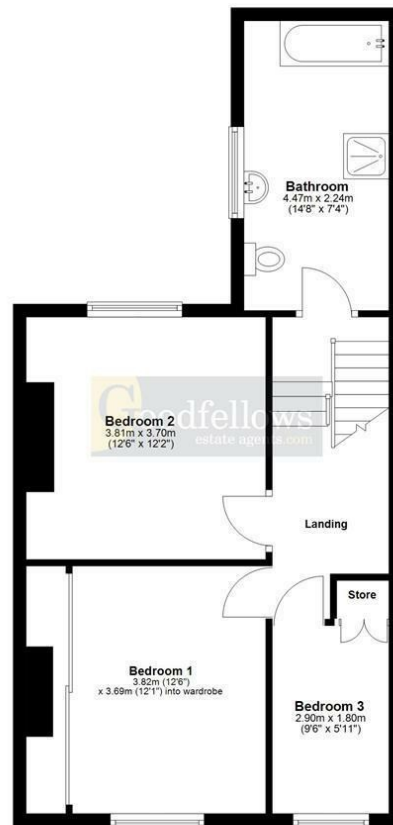




## Ground Floor



## First Floor



Total area: approx. 107.2 sq. metres (1153.6 sq. feet)

Whilst every attempt has been made to ensure the accuracy of the floor plan contained here, measurements of doors, windows, rooms and any other items are approximate and no responsibility is taken for any error, omission, or mis-statement. The Plan is for illustrative purposes only. Version 1

Plan produced using PlanUp.

Energy Efficiency Rating		Current	Potential
Very energy efficient - lower running costs			
(92 plus) <b>A</b>			
(81-91) <b>B</b>			
(69-80) <b>C</b>		74	80
(55-68) <b>D</b>			
(39-54) <b>E</b>			
(21-38) <b>F</b>			
(1-20) <b>G</b>			
Not energy efficient - higher running costs			
<b>England &amp; Wales</b>	EU Directive 2002/91/EC		

EPC Rating: C  
Council Tax Band: A

DIRECTIONS

## CONTACT

128 The Roman Way  
West Denton  
Newcastle upon Tyne  
NE5 5AD

E: westdenton@goodfellowsestateagents.com

T: 0191 2677500

<https://www.goodfellowsestateagents.com/>

**Goodfellows**  
estate agents.com